

LIQUIfit™ VAS

Angled Stop Valve

The LIQUIfit angle stop adapter valve is designed to allow users to quickly add a connection between an angle stop valve and a riser when installing water filtration equipment, coffee brewers or ice makers into a plumbing system. A tough engineered thermoplastic material minimizes the potential for cross threading and a removable banjo clip allows the installer to switch the handle orientation. The 1/2-in angle stop valve comes with an adapter and can be converted to either 1/2-in IPS or 3/8-in compression plumbing systems.



Contact Information:

Parker Hannifin Corporation
Fluid System Connectors Division
300 Parker Dr.
Otsego, MI 49078

phone 269-692-6555
fax 269-694-4614

water.parker.com

Product Features:

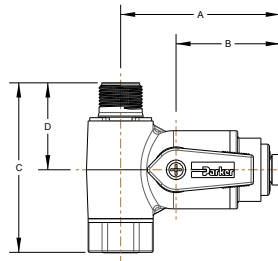
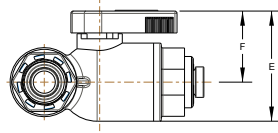
- Full flow design reduces pressure drop across the valve
- Valve body rotates for easy tube routing
- Removable clip for changing the handle orientation
- 3/8" female compression x 1/2" male NPSM adapter for connecting to 1/2" IPS lines



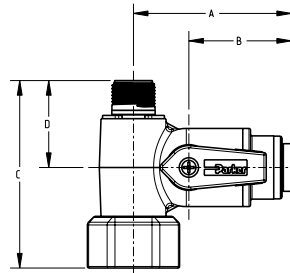
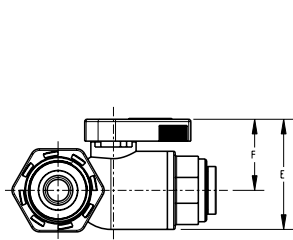
ENGINEERING YOUR SUCCESS.

LIQUIfit™ VAS

Angled Stop Valve

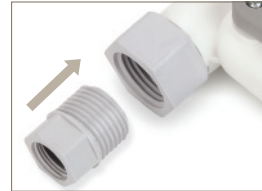
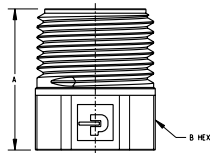


Part No.	Tube O.D.	Male Thread	Female Thread	A	B	C	D	E	F
LFPP4VAS6	1/4	3/8 Compression	3/8 Compression	1.79	1.07	2.17	1.11	1.41	.91
LFPP6VAS6	3/8	3/8 Compression	3/8 Compression	2.02	1.31	2.17	1.11	1.41	.91



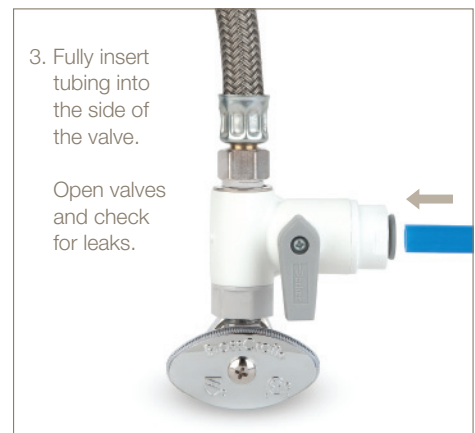
Part No.	Tube O.D.	Male Thread	Female Thread	A	B	C	D	E	F
LFPP4VAS8*	1/4	3/8 Compression	1/2 NPSM	1.79	1.07	2.40	1.11	1.41	.91
LFPP6VAS8*	3/8	3/8 Compression	1/2 NPSM	2.02	1.31	2.40	1.11	1.41	.91

* Part number includes adapter U8TVTA6



Banjo Bolt Adapter

Part No.	A	B	Thru Dia.	Male Thread	Female Thread
U8VTA6	.98	.75	.28	1/2 NPSM	3/8 Compression



Do not use thread sealant. Do not over tighten.